



2021



THE BRIDGE
FOR YOUTH



Impact
Report

Report to the Community

Dear Friends,

Our vision is “a community where all youth feel safe, accepted, and supported.” Since 1970, over 50,000 youth have found immediate safety and stability at The Bridge. For many of them, The Bridge is the one place where they feel truly welcomed and understood. **“You loved me when no one else did!”** Now more than ever, we rely on the generosity of the community to provide stability and support for the youth and families turn to us when there is no where else to go, and we could not do it without you – **Thank you!**

COVID-19, the murder of George Floyd, and the social unrest in the Twin Cities has had an immediate and lasting effect on youth in our community and the staff at The Bridge. The traumas from the pandemics of racism and COVID-19 exacerbated already acute needs in our community. In response, The Bridge expanded internal mental health capacity with a Lead Mental Health Therapist to expand access to these critical supports for youth and families, as well as all staff (both part-time and full-time) and their dependents.

Despite responding to these acute needs, The Bridge continues to prioritize racial justice and equity by committing to a culture of liberation where our collective impact and wholeness is defined and achieved by creating conditions for every member to thrive, co-create, and experience belonging in our community. This is achieved through intentional investment in reparation>restoration>transformation>liberation, with growing a loving and caring community as the core.

In September 2021, The Bridge adopted a new strategic framework to lead The Bridge into 2022 – 2024 as boldly as our founders Sisters Rita and Jean who launched The Bridge in 1970. Strategic planning was a 9-month process driven by shared voice – prioritizing the voice and expertise of youth, and intentionally included staff, board, community partners, thought leaders, and key organizational stakeholders. The Strategic Framework includes a new mission, vision, and values, centered in youth voice, racial justice and equity. Our mission specifically calls this forward: “centers youth voice, justice, and equity in all we do and empowers youth experiencing homelessness through safe shelter, basic needs, and healthy relationships.”

This process reaffirmed and identified emerging core competencies of The Bridge, which include minor-age homeless youth, pregnant/parenting youth experiencing homelessness, BIPOC and/or youth who identify as LGBTQ+, and centering youth voice in all we do. The Strategic Framework expands current efforts and fosters a youth leadership model where youth not only lead at all levels of the organization but are catalysts for broader community change. Committed to meeting the evolving needs of youth, in the coming months The Bridge will engage with community experts in housing and policy in a space of co-creation and imagination to develop a culturally responsive spectrum of services - from prevention to safe shelter to transitional living to an intentional housing community specifically for minor-age pregnant and parenting youth. This is a key area of growth and expansion for The Bridge, and we are excited to share more with you as this unfolds in 2023.

At the heart of The Bridge is our staff, and we are committed to reflecting youth and families at The Bridge by having a staff that is representative in their identities and lived expertise. To fulfill our mission, The Bridge must attract, hire, retain and engage highly skilled, creative, and motivated professionals. Therefore, The Bridge is committed to a competitive salary and benefit package that provides a sustainable standard of living and allows room for staff to learn, grow and develop both personally and professionally. We want The Bridge to be a place where professional development and career opportunities are experienced at any stage in our employees’ career.

We invite you to be part of and look forward to your partnership in the next chapter at The Bridge. Together, we are bringing hope, love, and the possibility of a bright future to youth experiencing homelessness.

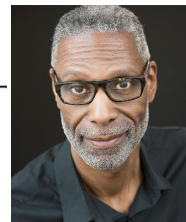
In Gratitude,



Lisa Mears
Lisa Mears, MPA
Executive Director



Kristine Oberg
Kristine Oberg
Board Chair



Geoff Jones
Geoff Jones
Board Vice-Chair



Programs

Youth Housing Programs

RESILIENCE HOUSE

Emergency shelter focused on family reunification whenever safe and possible. Provides temporary shelter, meals, access to healthcare, and case management for up to 14 youth, ages 10-17.

GLORIA'S PLACE

The only emergency shelter in Minnesota for pregnant/parenting youth (ages 15-17) and their children (ages 0-3). Provides emergency shelter, case management, healthcare, and parenting education for up to six families.

MARLENE'S PLACE

The only site-based transitional housing program specifically for pregnant/parenting youth (ages 16-20) and their children (ages 0-3) in Hennepin County. Provides housing, case management, healthcare, and parenting education for up to five families.

RITA'S HOUSE

An intentional living community providing affordable rental housing, case management, and independent living skills for 12 youth (ages 18-21).

SUPPORT AVAILABLE
24/7



MISSION

The Bridge for Youth centers youth voice, justice, and equity in all we do, and empowers youth experiencing homelessness through safe shelter, basic needs, and healthy relationships.

VISION

All youth feel safe, accepted, and supported.

Outreach & Support Services

Connects with youth in the community through street, site-based, and mobile outreach; school partnerships; community education; counseling; aftercare; support groups; and specialized case management for crime victims and youth who identify as LGBTQ+.

Youth Response Center

Available 24/7/365 provides immediate support and resources for youth and families. The Bridge also hosts YSNMN, a mobile app that connects youth with available shelter and resources in real time.

Counseling & Aftercare

Free weekly support groups that give youth a safe place to talk about challenges and find peer support. Current groups include So What If I Am, crime victims, and general support. Individual, group, and family counseling utilize positive youth development and trauma-informed approaches to promote awareness and personal growth.

The Mobile Youth Outreach Center

Meeting Immediate Needs

In Fall 2021, The Bridge launched The Mobile Youth Outreach Center. Retrofitting a bus, The Bridge Mobile Youth Outreach Center prioritizes addressing the immediate needs of BIPOC, LGBTQ+ and sexually exploited youth ages 10-21 in the Twin Cities; in spaces and places they feel safe and are reflective of their community, providing mobile intervention to meet immediate basic needs – healthy food, gender affirming clothing, resources for harm reduction and safety planning, assessments and referrals, and most importantly connection.



A Safe Place For All Youth

The Mobile Youth Outreach Center is a safe place for all youth and is available at local schools, partner site locations, community events, and in neighborhoods around the Twin Cities metro area.

" A space you can simply be."

– Zeke, former youth at The Bridge

Impact In 2021, The Bridge...

Provided Emergency
Shelter To

330

Youth

Throughout 2021, 5,962 youth engaged in programs Bridge; 95% received housing stability support through outreach, prevention, and intervention services, and 5% participated in shelter/housing programs. Amongst youth in shelter and housing programs, 76% exited to safe and stable housing, 94% had a personalized case plan, 77% reported a least one adult to whom they could go for support, and 70% were in school and/or working.

68%

Of Youth Exited
Emergency Shelter to
Safe and Stable Housing

Engaged with

3,945

Youth Through Outreach

Provided Affordable
Housing To

17

Youth In Rita's Place

Provided Transitional
Housing To

17

Families in Marlene's Place

79%

Of Youth In Marlene's Place and
Rita's House were employed and/or
enrolled in school

Responded to

1,694

Crisis Calls and Text
Messages

**Your support
provided HOPE
to nearly 6,000
youth.**

**Here's a glimpse into the
impact of your support:**

This year we introduced you to Tori and Zeke, two youth who give tremendous insight as they share their stories and experiences at The Bridge. We continue to be inspired by the resilience of youth and the power of their words.



Tori -

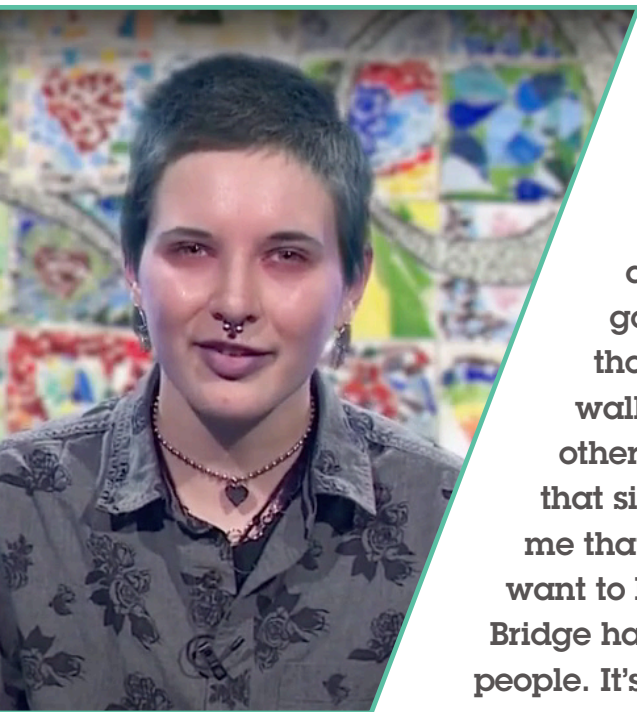
"I'm currently finishing school, with one credit left. I will be graduated! After that, I have two internships that are in place. After my internships, I've been thinking about starting college. I have a lot of things going for this year, so stay tuned..."

**" Just put your
trust in The Bridge"**

- Tori

Zeke -

"I find The Bridge to be a space where you can simply be. No Judgment. No need to put up walls. Somewhere to go and relax at times. I started coming to The Bridge in 7th grade, and that was five years ago. I'm 18 and graduated from high school now. I came to The Bridge to visit a support group called So What If I Am, and I remember my first day at that group I was terrified to go into a room full of people who I didn't know. What if they thought I was weird? Or didn't like me? But I remember as I walked into that group, as soon as I opened the door, all the other kids turned to say hi and they welcomed me. And it was that simple action of everyone taking the time to acknowledge me that made me want to be a part of So What, and it made me want to become a more active part of The Bridge for Youth... The Bridge has been somewhere I can go to unwind with like-minded people. It's somewhere where everyone, regardless of race, gender, or sex can talk and be heard."





FINANCIALS

October 1, 2021 to September 30, 2021

Statement of Activities

Revenue & Support

Contributions & Grants	\$1,653,171
Government Contracts & Grants	\$2,144,233
United Way	\$246,525
Special Events	\$51,104
Investment Income	\$13,888
Miscellaneous Income	\$42,341

Total Support & Revenue **\$4,151,262**

Expenses

Program Services	\$3,527,106
Management and General	\$378,285
Fundraising	\$345,520

Total Expenses **\$4,250,911**

Balance **-\$99,649**

Statement of Financial Position

Assets

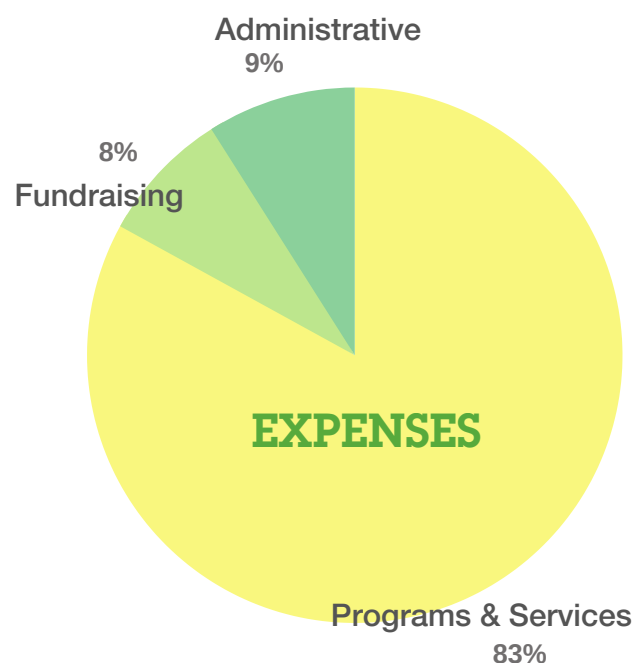
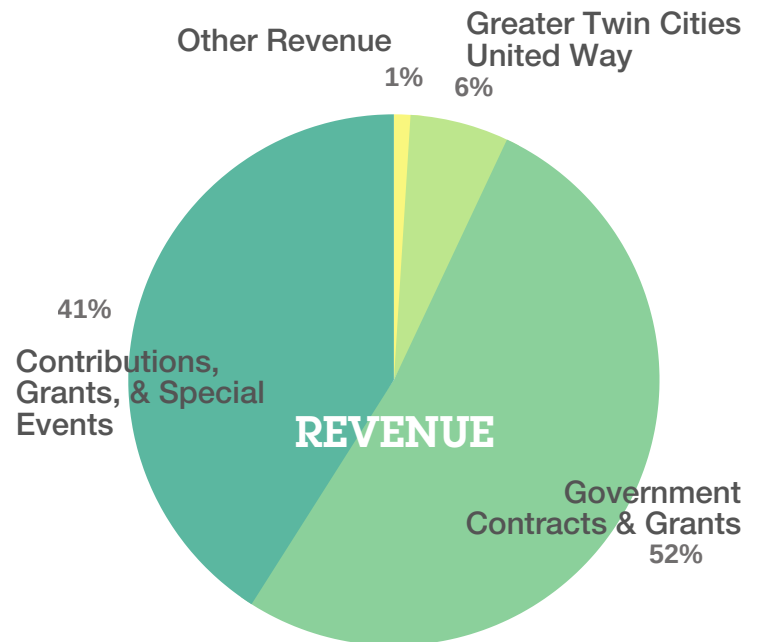
Current Assets	\$2,327,966
Property & Equipment (Net)	\$6,216,270
Other Assets	\$701,408

Total Assets **\$9,245,644**

Liabilities and Net Assets

Current Liabilities	\$340,254
Long-Term Liabilities	\$2,605,557
Net Assets	\$6,299,833

Total Liabilities & Net Assets **\$9,245,644**



2021 Board of Directors

- Kristine Oberg, Board Chair; US Bank, Vice President Business Banking Strategy Team Leader
- Geoffrey Jones, Board Vice Chair; CommonBond Communities, Director of Marketing and Leasing
- Bob Striker, Board Treasurer/Finance Committee Chair; Stinson LLP, Of Counsel
- Camille Bryant, Board Secretary; Hennepin County, Assistant Public Defender
- James R. Denniston, Governance Committee Chair;
Xcel Energy, Assistant General Counsel
- Dan DuHamel, Margaret A. Cargill Philanthropies, Program Officer
- Gretchen Gromatka, Fairview Health Services,
Senior Employee/Labor Relations Consultant
- Amelia Huffman, Minneapolis Police Department,
Interim Chief
- Sharon Hughes, Ameriprise Financial,
Senior Vice President Internal Communications
- Faith Jackson, City of Bloomington, Racial Equity Coordinator
- Cheniqua Johnson, St. Paul & Minnesota Foundation,
Relationship Manager
- Amy Britt Jones, Development Committee Chair,
ABJ Educational Consulting, Educational Consultant
- Michael Lehan, Head of School, IMG Academy
- Gloria Stamps-Smith, Hennepin County,
Assistant Hennepin County Attorney

PATIENCE

LOVE & CARING

COMMUNICATION

OUR VALUES

INTEGRITY

CO-CREATION

COMMUNITY

Executive Leadership Team

- Lisa Mears, MPA, Executive Director
- Angela Alvarez, HR & Administrative Director
- Thomas Craig, Finance Director
- Julie Gottschall, Clinical Director
- Christina Heineken Woodlee,
Senior Director of Strategy & Partnerships
- La’Kisha Hollmon-Griffin, Program Director





The Bridge is grateful to all of our generous donors!

FY20: 10/1/20 - 9/30/21

THANK YOU! to the many individual donors, volunteers, and community partners for your support this past year. Donations of all sizes make a difference.

Donors \$100,000+

- Buuck Family Fund of The Minneapolis Foundation
- Greater Twin Cities United Way
- Pohlad Family Foundation
- World Childhood Foundation, USA
- Otto Bremer Trust

Donors \$50,000 - \$99,999

- Patrick and Aimee Butler Family Foundation
- The Douglass Brandenburg Family Foundation
- Christopher and Sheila Jones Foundation
- Target Foundation

Donors \$25,000 - \$49,999

- Amerprise Financial, Inc.
- Fred C. and Katherine B. Andersen Foundation
- Delta Dental of Minnesota
- Greater Twin Cities United Way Arise Project
- Manitou Fund
- Medica Foundation
- Richard M. Schulze Family Foundation
- Shavlik Family Foundation
- Walser Automotive Group
- University of Minnesota

Donors \$10,000 - \$24,999

- Best Buy Foundation
- The Beverly Foundation
- Driscoll Foundation
- The Jaye F. and Betty F. Dyer Foundation
- Frey Foundation of Minnesota
- Hoeft Family Fund of The Minneapolis Foundation
- Kopp Family Foundation
- The John C. and Carolyn Parmer Noonan Foundation

\$726,986.50

Donated by 1,248 Individuals

219 In-Kind Donations

Totalling

\$65,709.22

395+

Hours Donated

By 67 Volunteers



The Bridge is grateful to all of our generous donors!

FY20: 10/1/20 - 9/30/21

THANK YOU! to the many individual donors, volunteers, and community partners for your support this past year. Donations of all sizes make a difference.

Donors \$10,000 - \$24,999

- SpartanNash Foundation
- St. Louis Park Family Services Collaborative
- The TJX Foundation, Inc.
- Xcel Energy Foundation

Donors \$5,000 - \$9,999

- Amazon Goods for Good
- Bergerson Family Foundation
- Edina Human Rights Commission
- Jayhawk Mechanical
- Margaret H. and James E. Kelley Foundation
- Minneapolis Area REALTORS Foundation
- Open Your Heart to the Hungry and Homeless
- RBC Foundation - USA
- Shakopee Mdewakanton Sioux Community
- Sisters of St. Joseph of Carondelet and Consociates
- Slaggie Family Foundation
- The OAK Foundation
- The Starbucks Foundation
- Turner Family Foundation
- Wells Foundation
- West Maka Ska Neighborhood Council

Donors \$1,000 - \$4,999

- Alerus
- Apple Valley Community of Christ
- Apple Valley Speech and Debate Alumni Association
- The Julie and Doug Baker, Jr. Foundation
- Jane E. Balch Memorial Fund
- The Bieber Family Foundation
- Burdick Family Fund of The Minneapolis Foundation

Donors \$1,000 - \$4,999

- Margaret A. Cargill Foundation
- DocuSign
- Catherine and Reginald Faragher Fund of The Minneapolis Foundation
- Fingerhut Family Foundation
- Mike & Linda Fiterman Family Foundation
- The Fredrikson & Byron Foundation
- General Dynamics Mission Systems, Inc.
- Head Family Foundation
- Heithoff Charitable Fund
- Kerlin Family Foundation
- Kismet 805 Foundation
- Lake Harriet United Methodist Church
- LeaderOne
- MacGill 1969 Trust
- Minnesota Correctional Facility - Oak Park
- Nelson Residential Design, Inc.
- Northrop Grumman
- NorthWood Distributing
- Park Public Schools & Community Foundation
- Prospect Creek Foundation
- The Elizabeth C. Quinlan Foundation
- Margaret Rivers Fund
- Spectrum
- Stein Industries, Inc.
- The Summit Foundation
- Tareen Dermatology
- Three Sisters Foundation



The Bridge is grateful to all of our generous donors!

FY20: 10/1/20 - 9/30/21

THANK YOU! to the many individual donors, volunteers, and community partners for your support this past year. Donations of all sizes make a difference.

Donors \$500 - \$999

- Dual Citizen Brewing Company
- Jeanne E. Corwin Revocable Trust
- Kowalski's Uptown Market
- The McKnight Foundation
- Arthur Dee and Mary Lou Popolizo Giving Fund
- Portico Benefit Services
- Prigge Family Fund
- TIAA
- Wernke Gift Fund

Donors \$100 - \$499

- Abbott Laboratories - EGC
- Canadian Pacific
- Classic Corvettes of Minnesota
- Granite United Way
- HumanistsMN
- IWJ Charitable Foundation
- JustGive
- Royal Credit Union
- Southern California Edison
- VMLY&R Foundation

Bridge Bash 2021

an annual celebration of the resiliency of youth

Carmichael Lynch.

BKND 2ALL
Dedicated to Spreading Kindness

Sponsored by:



ballinger | leafblad





" You loved me when
no one else did "

– Former youth
at The Bridge



THE BRIDGE
FOR YOUTH

bridgeforyouth.org |    